



Draft Proposal Legislative Districts

By Commissioner Joe Fain

September 21, 2021



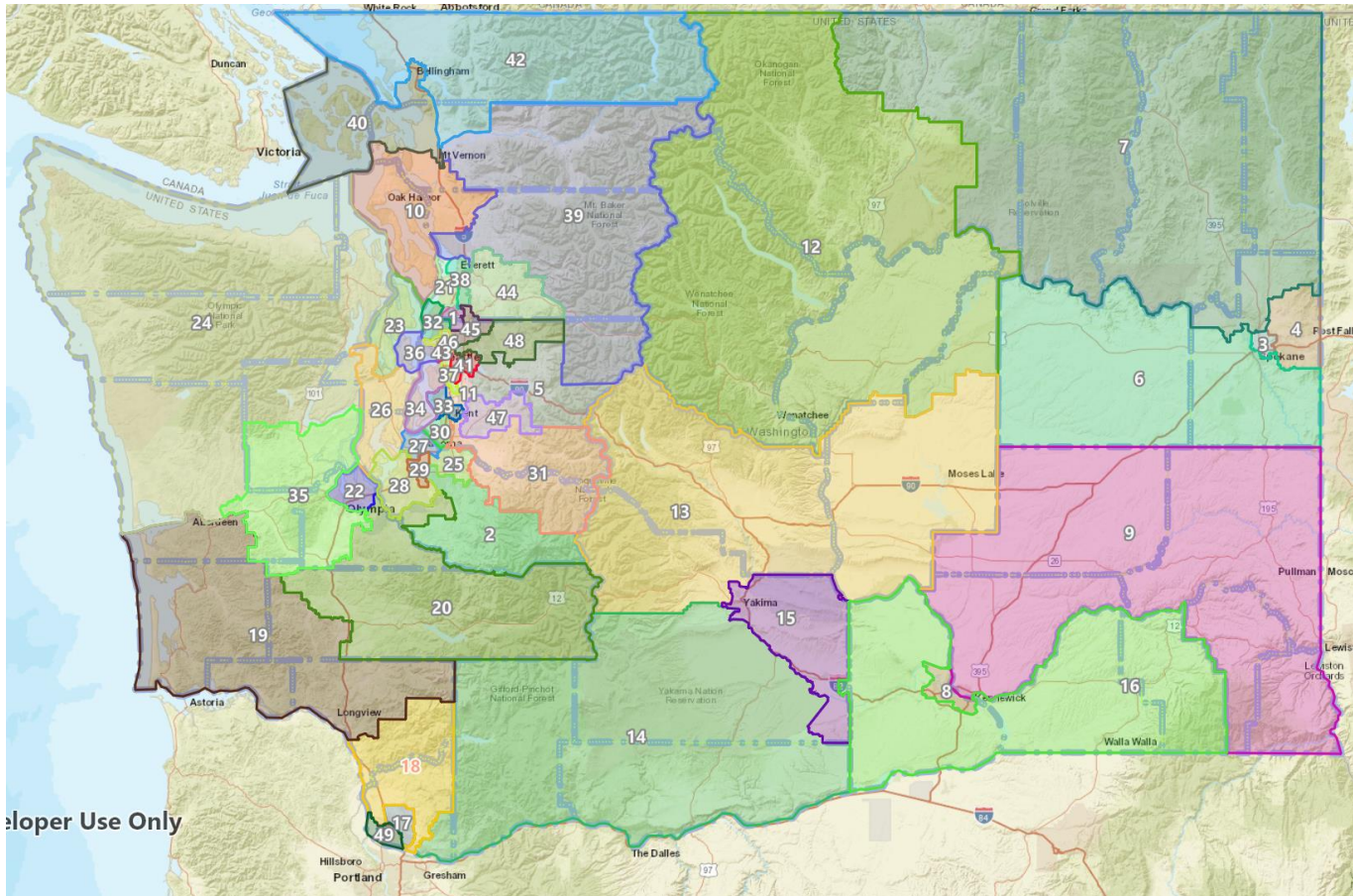
Legislative Proposal

Follows criteria set out in statute

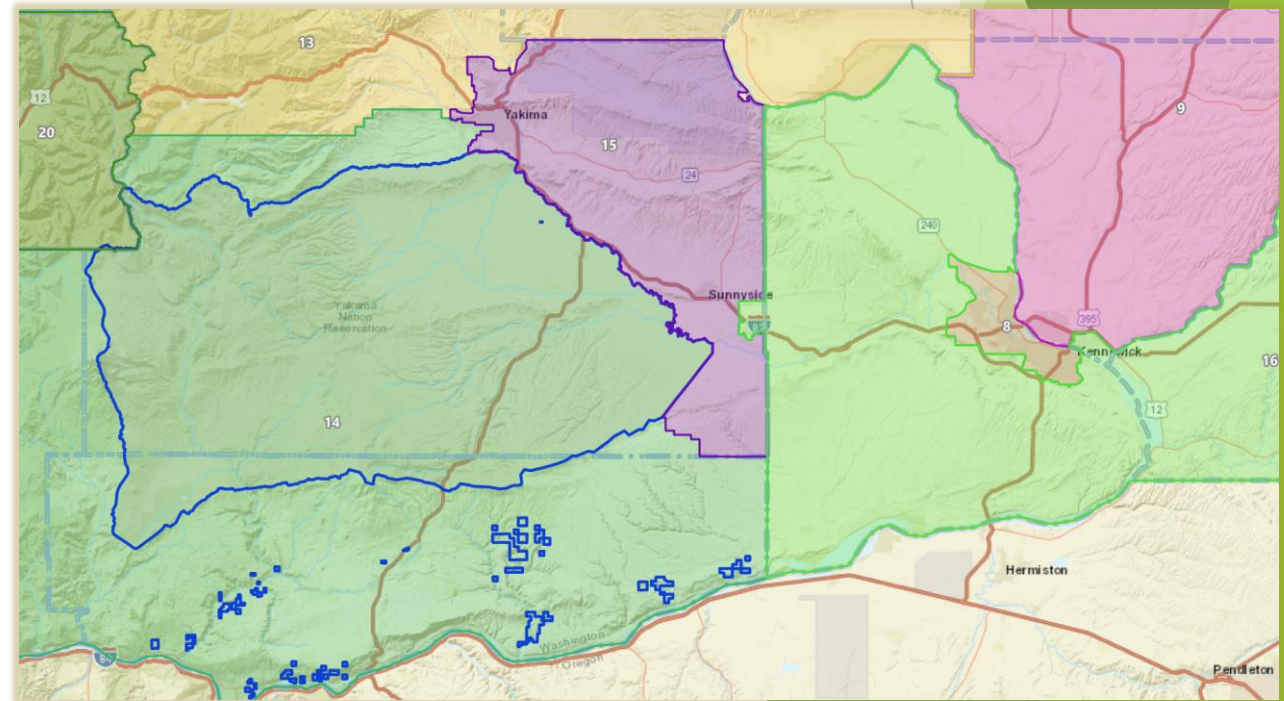
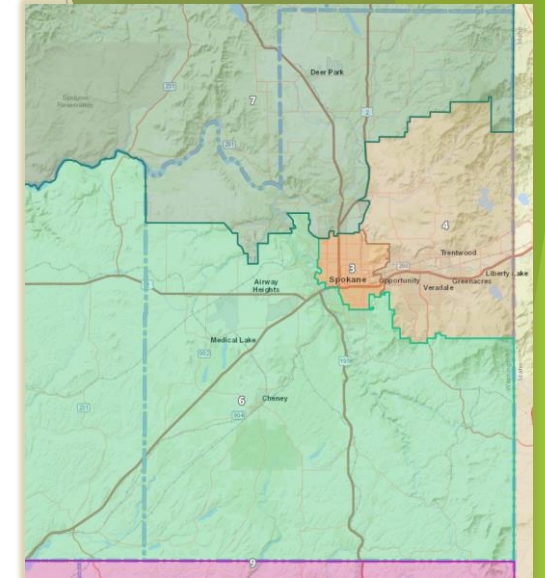
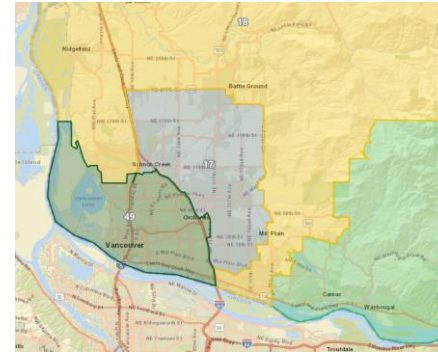
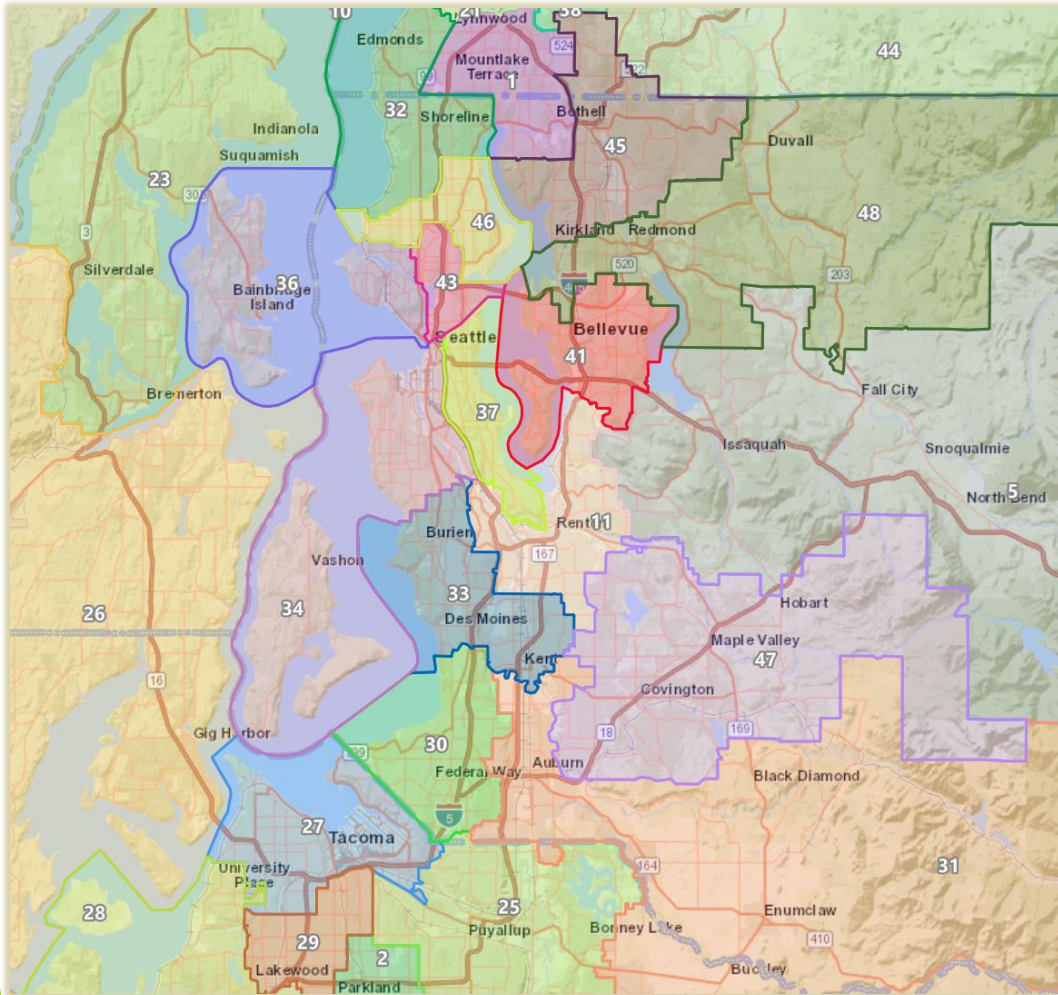
- ▶ **Promotes population equality**
 - ▶ Districts are within .011% of ideal from a high of +109 to a low of -70; existing districts are 23.5% from ideal overall (+22,880 to -14,094)
- ▶ **Maintains communities of interest common to most Washingtonians**
 - ▶ Focus was on school district boundaries that are relatively well known, also offer convenient, connected territories

Despite significant population change, 73% of existing residents remain within the current districts.

Fain Proposal Statewide Legislative



Fain Proposal Statewide Legislative





Difference from Target Population

DISTRICT	Adjusted Population		Proposal	
	2012 LDs	Proposal	Target	Difference
1	171,110	157,249	157,251	-2
2	165,789	157,225	157,251	-26
3	146,235	157,253	157,251	2
4	163,026	157,226	157,251	-25
5	161,142	157,255	157,251	4
6	159,456	157,239	157,251	-12
7	149,664	157,292	157,251	41
8	164,376	157,256	157,251	5
9	159,183	157,247	157,251	-4
10	153,033	157,249	157,251	-2
11	153,994	157,251	157,251	0
12	150,097	157,249	157,251	-2
13	150,969	157,270	157,251	19
14	147,296	157,332	157,251	81
15	145,084	157,196	157,251	-55
16	145,799	157,280	157,251	29
17	166,721	157,239	157,251	-12
18	164,493	157,247	157,251	-4
19	143,157	157,257	157,251	6
20	153,048	157,230	157,251	-21
21	163,336	157,243	157,251	-8
22	163,481	157,257	157,251	6
23	150,327	157,241	157,251	-10
24	147,542	157,319	157,251	68

DISTRICT	Adjusted Population		Proposal	
	2012 LDs	Proposal	Target	Difference
25	159,541	157,223	157,251	-28
26	154,076	157,211	157,251	-40
27	151,768	157,251	157,251	0
28	155,604	157,261	157,251	10
29	160,518	157,260	157,251	9
30	155,255	157,228	157,251	-23
31	164,902	157,247	157,251	-4
32	151,111	157,259	157,251	8
33	157,174	157,266	157,251	15
34	156,247	157,219	157,251	-32
35	147,719	157,181	157,251	-70
36	175,172	157,245	157,251	-6
37	160,077	157,258	157,251	7
38	149,567	157,265	157,251	14
39	153,530	157,236	157,251	-15
40	150,289	157,257	157,251	6
41	162,798	157,200	157,251	-51
42	158,169	157,247	157,251	-4
43	180,131	157,253	157,251	2
44	163,247	157,290	157,251	39
45	160,387	157,256	157,251	5
46	154,763	157,256	157,251	5
47	159,608	157,360	157,251	109
48	168,129	157,248	157,251	-3
49	157,141	157,202	157,251	-49

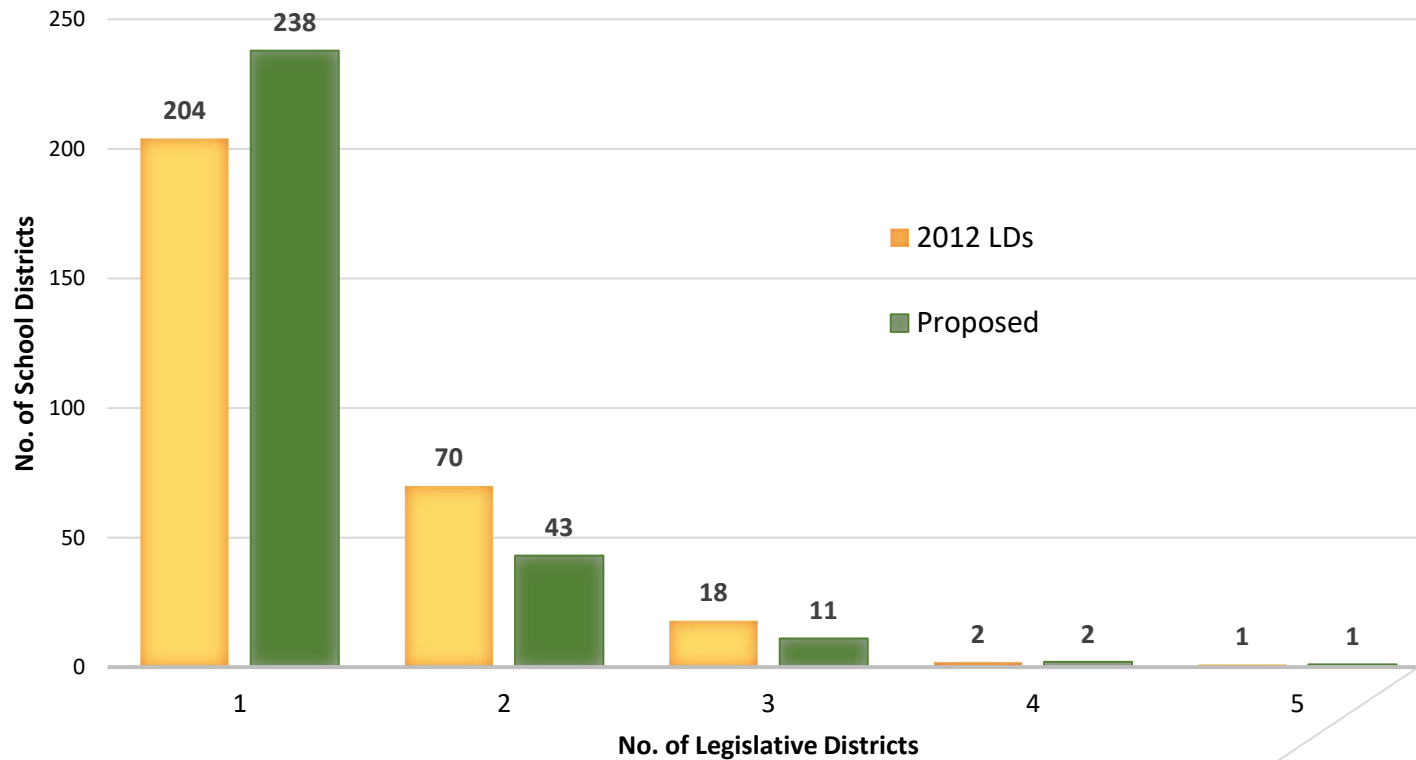
School Districts - Change within LD

School District (295)	Current	Proposal	Change
100% within LD	204	238	+ 32
More than 75% in one LD	248	266	+ 18
More than 50% in one LD	285	286	+ 1

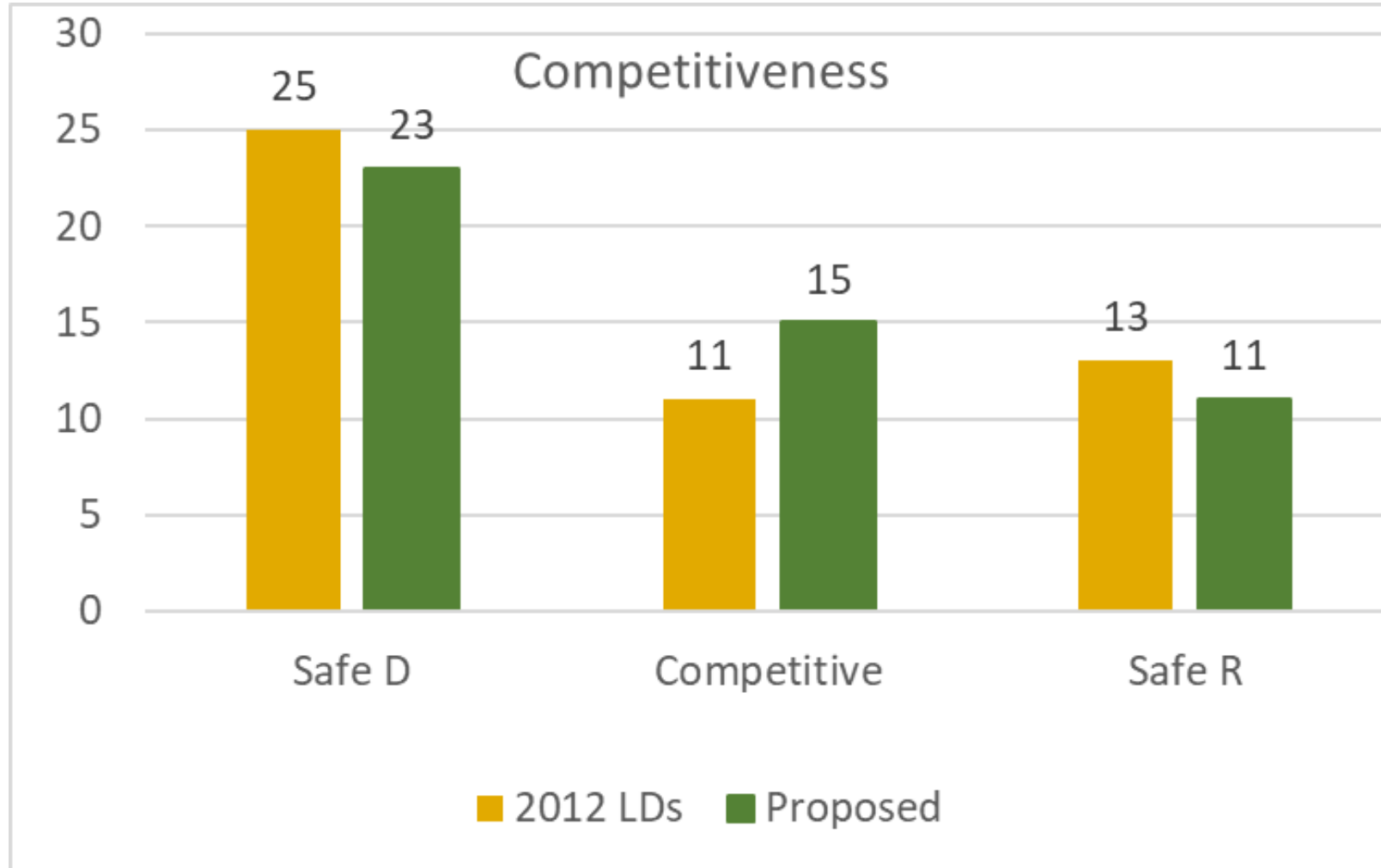
excludes areas of less than 5% population to account for geographic discrepancies

School Districts - Change within LD

**NO. OF SCHOOL DISTRICTS
BY NO. OF DISTRICTS IN WHICH SDs RESIDE**



Electoral Comparison





Legislative Proposal

Eastern Washington

- ▶ Population growth has not been as dramatic as on the west side. The needed population to reach equity amongst the districts is, as it was last decade, taken from Clark County.
 - ▶ 3rd: northern boundary set by Mead School District line, remains in the Spokane city and school district
 - ▶ 4th: shares Mead SD with the 7th, contains all of eastern Spokane school districts, and small part of Spokane for population
 - ▶ 6th: includes Spokane city and School District and all of the west and south county school districts, picks up needed population from Lincoln County.
 - ▶ 7th: retreats from Okanogan to the Tonasket and Nespelem School District boundaries, adds more of Mead and Nine Mile Falls SD in Spokane County
 - ▶ 12th: adds Omak and picks up Coulee-Hartline & part of Soap Lake school districts in Grant County.
 - ▶ 9th: remains largely unchanged, adds more of Pasco.
 - ▶ 8th: contracts within Richland and Kennewick
 - ▶ 16th: maintains Walla Walla / Benton presence, picks up some of Grandview in Yakima County to reach population equity
 - ▶ 14th: expands in south Yakima County to include entire Yakama tribal areas
 - ▶ 15th: makes up for loss of Yakima Valley areas by adding up needed population in and around Yakima.
 - ▶ 13th: moves into northwest Yakima County and the Naches and Highland school districts.



Legislative Proposal

Southwest & Coastal Washington

- ▶ **17th**: loses parts of the district to the 18th
- ▶ **49th**: adjustments to the 49th line with the 17th; 18th moves into Kalama School District and lower Cowlitz County.
- ▶ **20th**: moves out of Cowlitz County, ceding the upper portion to the 19th Legislative District
- ▶ **19th** : moves more into Cowlitz County, small adjustments
- ▶ **35th**: moves more into Grays Harbor and Thurston Counties; the 24th moves into Mason and Kitsap Counties
- ▶ **23rd**: centered on Bremerton proper
- ▶ **26th**: with the remaining portion of Kitsap County left to the 26th.



Legislative Proposal

South Sound

- ▶ **22nd:** remains in Olympia / Lacey
- ▶ **20th:** moved out of Cowlitz, makes up population in the Yelm and Bethel school districts in Thurston and Pierce Counties
- ▶ **28th:** northern boundary formed by University Place - Tacoma School district line, moves into Spanaway and Bethel School District
- ▶ **2nd:** shares Bethel, Clover Park, and Puyallup school districts and is all of Eatonville, Orting and Carbonado school districts
- ▶ **25th:** all of the Deiringer and Sumner school districts and shares the Puyallup and Fife school districts
- ▶ **27th:** follows the Tacoma School District around UP, mainly north Tacoma
- ▶ **29th:** contains parts of the Tacoma, Clover Park and Franklin Pierce school districts
- ▶ **31st:** all of the White River and Enumclaw school districts and parts of Auburn, Fife, and Kent school districts



Legislative Proposal

Central Sound

- ▶ Consolidated as much of the Seattle School District as possible into the 46th, 43rd, 34th, 36th, and 37th.
- ▶ 30th: based on the Federal Way School District
- ▶ 33rd: most of Highline School District and part of the Kent School District
- ▶ 11th: is centered on the Renton and Tukwila School Districts
- ▶ 47th: all the of Tahoma School District and parts of Kent and Auburn SDs
- ▶ 5th: includes of the Snoqualmie and most of the Issaquah School Districts
- ▶ 41st: bulk of the Bellevue School District and contains all of the Mercer Island SD
- ▶ 48th: includes all of the Riverview School District and much of the Lake WA SD
- ▶ 45th: shares Lake Washington and Northshore School Districts into Snohomish County
- ▶ 1st: part of the Northshore and Edmonds SD in Snohomish County
- ▶ 32nd: contains all of the Shoreline School District, part of the Seattle School District and part of the Edmonds SD



Legislative Proposal

North Sound

- ▶ **38th:** contains the Everett School District and parts of surrounding districts for population
- ▶ **21st:** most of the Mukilteo School District and the remaining part of Edmonds SD not taken by the 1st and 32nd
- ▶ **44th:** all of Monroe, Lake Stevens and much of Snohomish School Districts
- ▶ **39th:** contains all of the Marysville and Darrington Districts and parts of Arlington, Burlington-Edison, Concrete, Mount Vernon and Sedro-Woolley SDs
- ▶ **10th:** continues to include all of Camano and Whidbey Islands; assumes all of the Lakewood SD, and shares the Arlington and Mt. Vernon School Districts
- ▶ **40th:** San Juan County and all of Bellingham city proper
- ▶ **42nd:** moves out of Bellingham, makes up loss in north Skagit County and the Sedro-Woolley School District



Legislative Proposal

LD	Major Areas	Residents currently within existing LD
1	North King / South Snohomish	56%
2	East Pierce County	43%
3	Spokane city	81%
4	Spokane Valley	98%
5	Issaquah, Sammamish, east King County	62%
6	South Spokane County, city and Lincoln County	76%
7	Northeast Washington	86%
8	Richland and Kennewick	100%
9	Southeast Washington	95%
10	Island County	86%
11	Renton, Tukwila	70%
12	Chelan, Douglas Counties	93%
13	Central Washington	89%
14	South central Washington	58%
15	Northeast Yakima County	71%
16	Walla Walla, Benton, Franklin	88%
17	Central Clark County	95%
18	North Clark / south Cowlitz Counties	68%
19	Southwest Washington	84%
20	Lewis, Pierce, / Thurston Counties	52%
21	Mukilteo / Lynnwood	76%
22	Olympia	82%
23	North Kitsap, Bremerton	78%
24	Olympia Peninsula	85%

LD	Major Areas	Residents currently within existing LD
25	Lake Tapps, Puyallup, Bonney Lake	45%
26	South, central Kitsap Peninsula	86%
27	North Tacoma	71%
28	Southwest Pierce County, Dupont / Lakewood	78%
29	South Tacoma, Lakewood	71%
30	Federal Way	79%
31	Northeast Pierce / South and east King	51%
32	Shoreline	66%
33	Burien, Des Moines, Kent	75%
34	West Seattle / Vashon	84%
35	Rural Grays Harbor, Mason and Thurston Counties	57%
36	Bainbridge Island / Queen Anne	76%
37	South Seattle / Renton	89%
38	Everett, Mill Creek	46%
39	Rural Snohomish, Skagit Counties	44%
40	San Juan County, Bellingham	66%
41	Mercer Island / Bellevue / Redmond	52%
42	Rural Whatcom and Skagit Counties	72%
43	Seattle, Capitol Hill to Green Lake	97%
44	Lake Stevens / Monroe	52%
45	Northeast King, south Snohomish	60%
46	Seattle, Laurelhurst / Lake City to Sunset Hill	66%
47	Southeast King County	59%
48	Bellevue, Kirkland, Redmond, and Sammamish	53%
49	Vancouver	97%